

Worksheet: Design your own museum

Age Group: 8 – 12 years

Curate and design your own exhibition! Select

✦ **the objects** ✦

of your choice from the listings below. Make groupings by either following a chronological order, or according to the type or function of the objects. Create your own labels but using the information below. Place your cutout selection and labels on the show cases images. Get creative by drawing in and adding additional showcases and objects. Have Fun!

Once done,

don't forget

to share your work by posting on our social media platforms



Copper Bull Head

This head was discovered under the floor of the second Barbar Temple. It was originally part of the wooden box of the musical harp that was used in religious and special ceremonies.



**Soft-stone
Carved Vessel**

Early Dilmun Period - This vessel, made in southern Iran, was found in the Dilmunia tombs in the Saar region, and it is made of chlorite.



Gold Dinar

Islamic Period, Bilad Al Qadeem - This well-preserved coin was found near to Al Khamis Mosque. The coin itself mentions the name of the Fatimid Caliph Nizar Al Aziz.



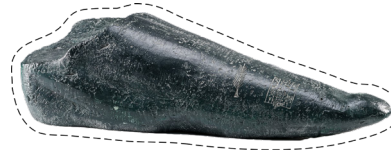
Copper Male Figurine

Early Dilmun Period - This artifact was most likely used as a mirror handle. It was found in the second temple at the Barbar archaeological site.



**Painted Pottery
Suspension Jar**

Early Dilmun Period -
A unique vessel found
within the Dilmun Burial
Mounds of Saar, this jar was
likely a local production that
mixed the different artistic
and technical influences
present in Bahrain
throughout the Bronze Age.



Durand Stone

Early Dilmun Period -
An iconic artifact named
after the then British
Political Resident in Bahrain,
Captain E.L. Durand.



**Head of a Female
Figurine**

Tylos period -
This figurine head is one
of the masterpieces on
display at the Qal'at Al
Bahrain Site Museum.
The artifact is most likely
of the Greek goddess
Aphrodite, and still shows
traces of its original paint.



Snake Bowl

Late Dilmun period -
This ritual vase highlights
a unique practice from the
Late Dilmun period; it is
thought that this specific
artifact brought divine
protection to the inhabitants
of ancient Dilmun.



**Miniature soft
stone vessel**

Early Dilmun Period -
Found in 1992 in the
Al-Maqsha Dilmun
cemetery, this Bronze Age
miniature vessel is made
of fine greenish chlorite.



Pedestaled Goblet

Early Dilmun Period -
An elegant goblet resting on
a fine clay pedestal found
within the Dilmun Burial
Mounds in Saar.



**Fragment of a jar
with a seal impression**


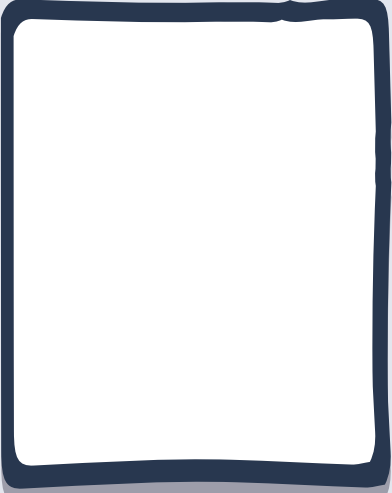
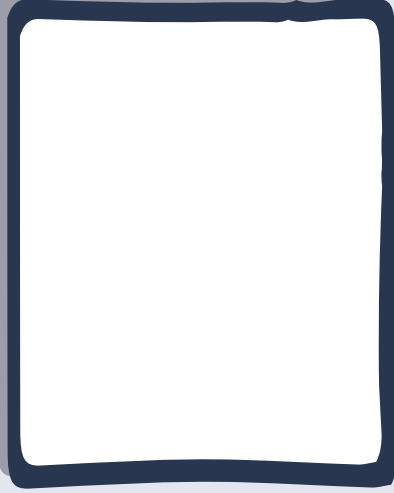
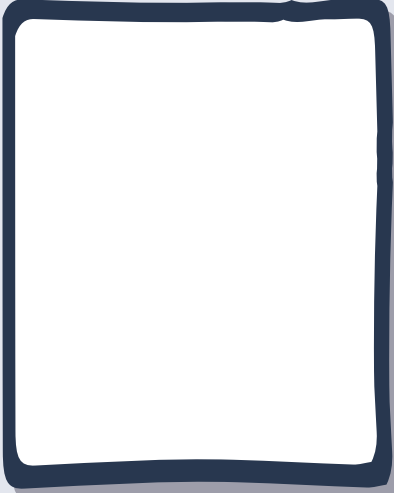





Early Dilmun period -
This exceptional
impression of a traditional
Dilmun seal features a
man standing between
two antelopes, found in
the Barbar Temple Sacred
Well in 1959.



**Pearls stored
in a shell**

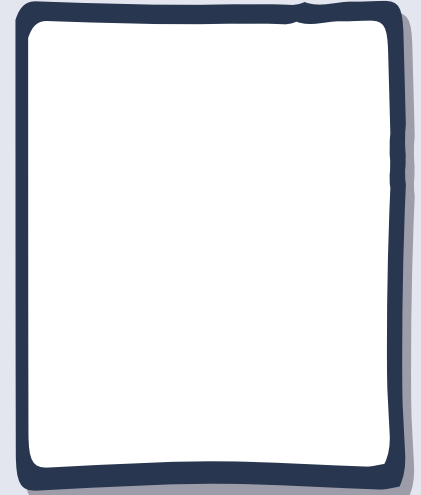
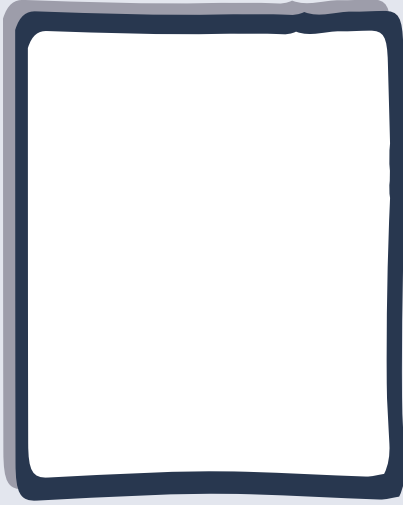
These pearls in a Murex
shell were excavated at
Qal'at al-Bahrain. This
exquisite find remains on
display at the Qal'at
Al-Bahrain Site Museum.

Gule here

				
<hr/> <hr/> <hr/> <hr/> <hr/> <hr/> <hr/>	<hr/> <hr/> <hr/> <hr/> <hr/> <hr/> <hr/>	<hr/> <hr/> <hr/> <hr/> <hr/> <hr/> <hr/>	<hr/> <hr/> <hr/> <hr/> <hr/> <hr/> <hr/>	
				

Gule here

Fold here



.....

.....

.....

.....

.....

.....

.....

.....

.....

.....

.....

.....

.....

.....

.....

.....

.....

.....

.....

.....

.....

.....

.....

.....



Cut here

Fold here



.....

.....

.....

.....

.....

.....

.....

.....

.....

.....

.....

.....

.....

.....

.....

.....

.....

.....

.....

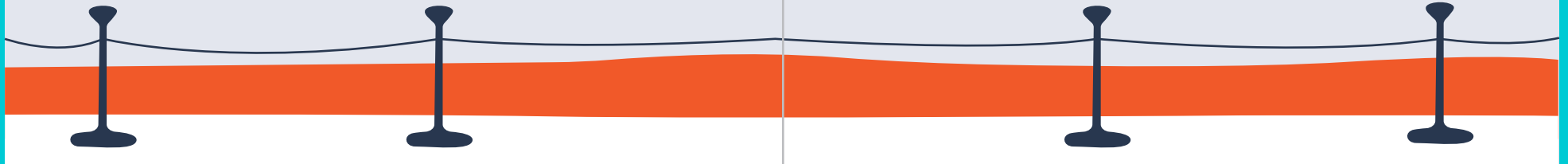
.....

.....

.....

.....

.....



Cut here